



### PROPERTY INFORMATION

<b>LOCATION</b>	I-84 Exit 57, W on Gowen Rd, S on Eisenman Rd
<b>PROPERTY TYPE</b>	Industrial Land
<b>ZONING</b>	M-1D
<b>LAND SIZE</b>	±2.86 acres
<b>GROUND LEASE</b>	Contact Agent
<b>PRICE</b>	Contact Agent

### HIGHLIGHTS

- Adjacent to Idaho Ice World
- Excellent I-84 frontage and visibility
- Seller does not own the billboards located on the property

This information, while not guaranteed, is from sources we believe to be reliable. This data is subject to price change, corrections, errors, omissions, prior sale, and/or withdrawal.

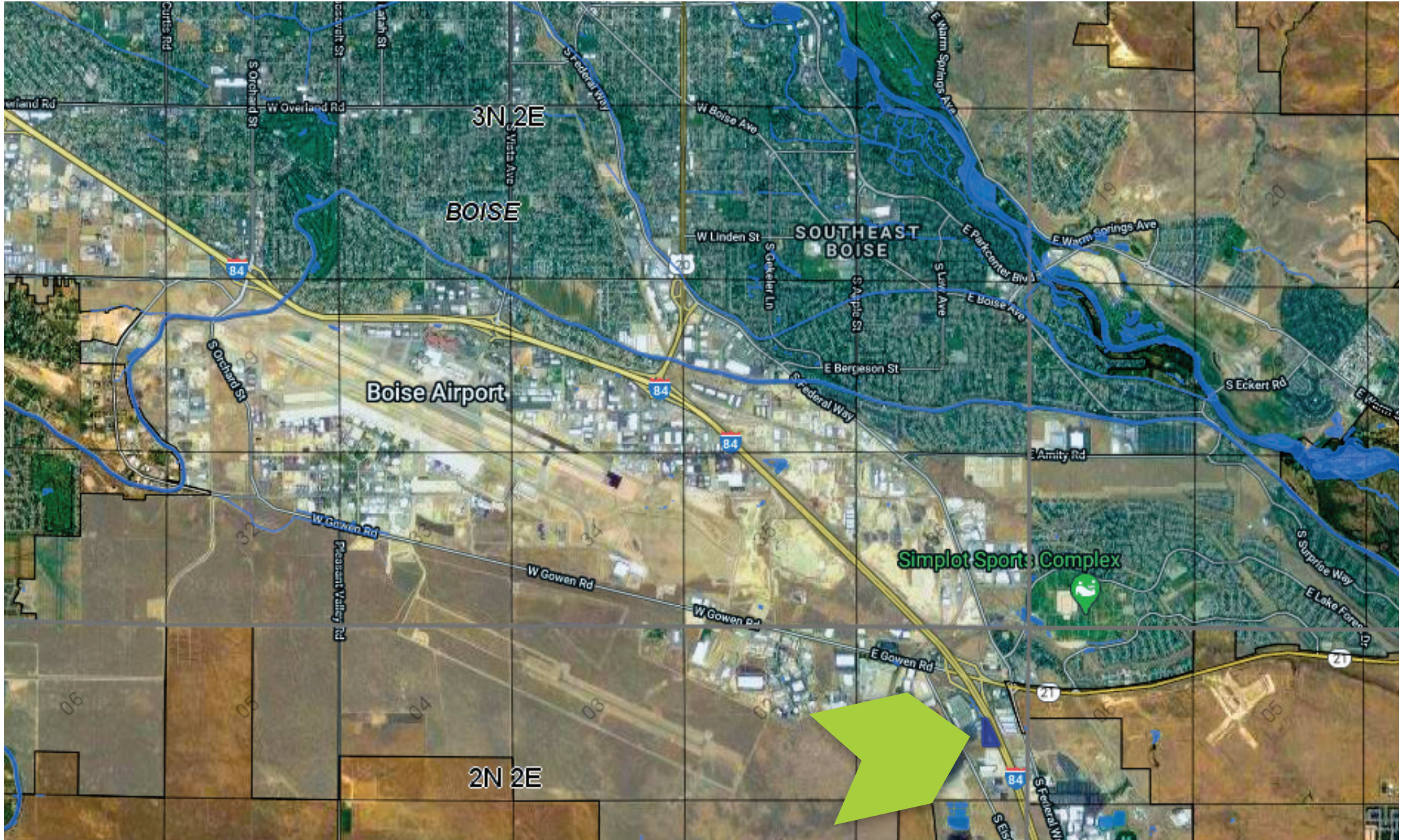


**BEN FULCHER**  
208.859.7407 | bfulcher@naiselect.com

**BRIAN RALLENS**  
208.761.0924 | brian@rallensrealty.com

[rallensrealty.com](http://rallensrealty.com)

**7090 S EISENMAN ROAD** Boise, Idaho 83716



**BEN FULCHER**

208.859.7407 | bfulcher@naiselect.com

**BRIAN RALLENS**

208.761.0924 | brian@rallensrealty.com

[rallensrealty.com](http://rallensrealty.com)